

ASSEMBLY

MADE EASY.

A S S E M B L Y I N S T R U C T I O N S

WORTH KNOWING



Dear customer, dear customer,

we are pleased that you have decided to purchase our product. Please be sure to read these instructions before using your kitchen for the first time and also be sure to observe the operating instructions enclosed with the furniture, accessories and electrical appliances. The materials used are mostly wood-based materials coated with polymers, laminates and varnishes.

The furniture is manufactured according to industrial methods and standards. The manufacturer is not liable for damage caused by improper use of the kitchen furniture. Furthermore, the manufacturer accepts no liability for the consequences of improper assembly, care and use of the kitchen.

We hope you enjoy your new kitchen.

CONTENT

| | |
|-----------------------------------|----|
| General information | 04 |
| Fitting the plinth feet | 05 |
| Fitting the cabinets | 05 |
| Fitting the fillers | 07 |
| Fitting the worktops | 08 |
| Worktop: Creating cut-outs | 09 |
| Worktop: Joining | 10 |
| Fitting the plinth | 11 |
| Fitting of wall units | 12 |
| Fitting the hinges | 14 |
| Adjustment of hinges | 15 |
| Adjustment of drawers & pull-outs | 16 |
| Fitting the tall housings | 17 |
| Fitting of heavy load suspension | 18 |
| Fitting Q3 & Q3 ^{SL} | 19 |
| Accessories Q3 | 20 |

GENERAL INFORMATION

No altering manipulations may be made to the accessories or electrical appliances. This applies in particular to fixing holes. Before fitting, check that all connections are prepared and have been made properly. Before drilling, please make sure that there are no concealed cables in the drilling area. The enclosed wall fittings (dowels, screws) are only suitable for solid brick, solid sand-lime brick, concrete and clinker brick.

When fixing all cabinets to other wall materials, please use special dowels and screws (available from specialist dealers).

The pull-out strength of the suspension for wall cabinets or similarly loaded items must be at least 1200 N (Newton) (corresponds to approx. 120 kg). Tall housings must be fixed to the wall to increase stability. Please refer to the corresponding section in these assembly instructions. Before drilling work, please check that no pipes for gas, water, electricity, heating or drains have been laid at the location.

The fitting must be carried out exactly according to the instructions of the manufacturer. Failure to observe the safety precautions may result in serious personal injury and damage to property.

Please also observe the enclosed manufacturer's care and maintenance instructions. Any protective film should only be removed in the last work step. The fitting of your new kitchen should only be carried out by appropriately trained specialists. The assembly instructions must be read thoroughly before starting installation.

All assembling or care instructions enclosed with the kitchen must be handed over to the end user after installation.

F I T T I N G

PLINTH FEET



Carefully lay the base unit on its side without removing the packaging.



Take the bag with the plinth feet from the service pack.



Insert the plinth foot into the plinth glide attached to the base. Available plinth heights 7 / 10 / 13 / 15 / 20 cm.

The adjustment possibility is +/- 15 mm.



Twist the plinth feet to align the furniture parts exactly.

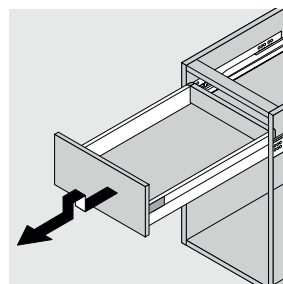
CABINETS



Before you start assembling, place a spirit level on the floor. Start aligning the height at the lowest point in the room.



Align all cabinets in both directions with the spirit level to the nearest millimetre.



Remove all drawers and pull-outs from the cabinets before assembling.



Fix the cabinets in place with the help of clamps.

F I T T I N G

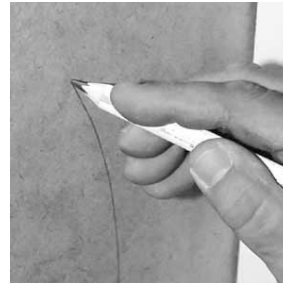
CABINETS



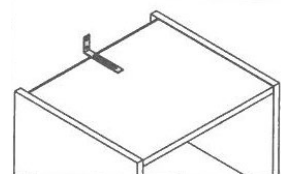
As the furniture parts are connected with a Spax screw (approx. 30 mm), the base units should be pre-drilled first.



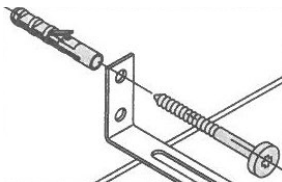
When connecting the cabinets with 3 Spax screws, make sure that the front edges of the carcass are flush.



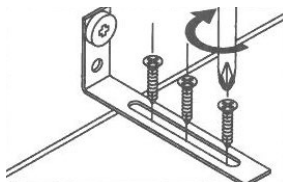
Draw possible connections on the back panel of the sink unit and then remove the marked points.



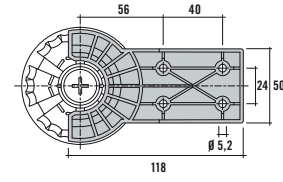
To prevent the cabinets from tipping over, please fit the anti-tipper supplied.



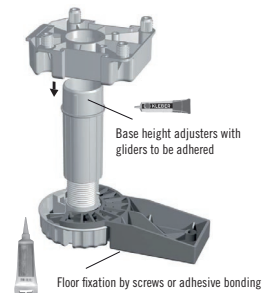
Attention:
The mounting material provided by us for wall installation (screws & plugs) is exclusively suitable for use in solid bricks, calcium silicate bricks, concrete, and facing bricks.



Suitable mounting material must be procured locally for other wall materials.
The installation of wall-mounted furniture should only be carried out by trained professionals.



Anti-tip device for freestanding base



Two safety devices are required for widths of 1,800 mm and above. For each additional meter, two additional safety devices are required. Installation on site.

F I T T I N G

FILLERS



Fix the items in place with the help of clamps.



As the furniture parts are connected with a Spax screw, the base units must first be pre-drilled.



When connecting the fillers with 3 Spax screws, make sure that the carcass front edges are flush.

WORKTOPS

Place the worktop on top of the base units.

If the row is fitted tightly in a niche, it is advisable to remove the tall housings again. You will then have more space to work with.

Transfer the width dimension of the oven housing and sink cabinet to the worktop.

Draw the cut-out dimensions for the hob and sink on the worktop.

Please pay attention to the cut-out dimensions specified by the appliance manufacturer!

The cut-out dimension of the hob is centered within the width dimension of the oven housing.

ATTENTION:

Before you start cutting out, check again carefully:

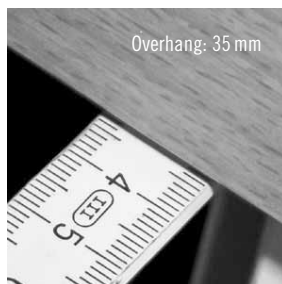
- Are the worktop dimensions and the milled joints correct? (Fit the worktop on a trial basis!)
- Does the sink fit into the sink unit below it?
- Is the distance between the wall and the sink/cooker wide enough for the wall trim?

If necessary, make corrections to the outlined cut-out dimensions. Lift the worktop from the base units and place it on the assembly trestles.

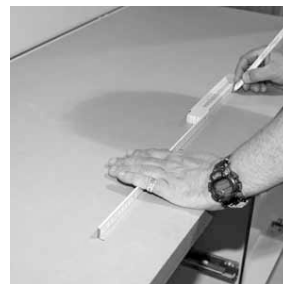


Before you start fitting the worktops you should put the worktops together and check if they fit properly.

Important note:
Only then fit the sink and the hob.



For the joint: Use the screw fitting supplied by us. First put glue into the pre-milled joint, insert the Lamello and then coat the entire surface.



Place the worktop with the top on a firm surface and then mark out the cut-out on the back.

Be sure to take care of the front overhang of 35 mm. If available, please use the template.



First cut the long cuts with a saw (possibly also with a jigsaw).

CREATING CUT-OUTS

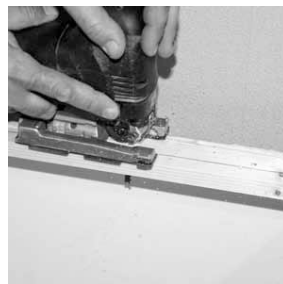


Then carefully cut out the mitres with a jigsaw.

Caution:
There is a risk of breakage due to the weakening of the worktop!



After you have made the cut-out, prepare for fitting the sink or hob.



Important:
For the later fitting of the worktop, you must first cut out the front traverse of the sink base unit.



For safety reasons, you should always seal all cut-outs with a sealant or use our worktop sealing tape.



Then place the sink or hob in the cut-out and tighten the clips from below with a hand screwdriver.

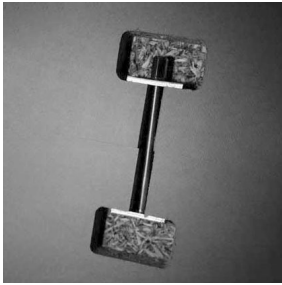
Then fit the sink and hob according to the manufacturer's instructions.



Immediately remove any sealant that has come out with a soft cloth.

WORKTOPS

JOINING



For a worktop joint, insert the wooden plates into the longitudinal groove of the worktops and coat the butt edges with the enclosed sealant before joining. To make it easier to remove the sealant from the surface of the worktop, we recommend masking it off with adhesive tape beforehand.

Carefully join the worktops and insert the screw fitting from below.

First tighten the screw fitting by hand. Then tighten it slightly with an open-ended spanner.

First check the accuracy of fit on the top side and only then tighten the screw fitting. Remove excess glue immediately.



Connect the worktop to the base unit using the front traverse.



Then join the worktop to the carcass using the rear traverse.

F I T T I N G

PLINTH



Place the plinth in front of the plinth feet and mark the length.

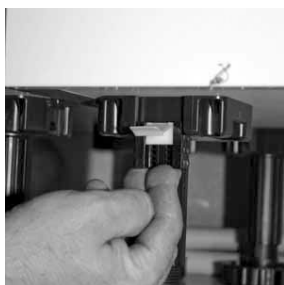
Use a cross-cut saw to cut the plinth to the required length. Please make a height cut at the top of the plinth.



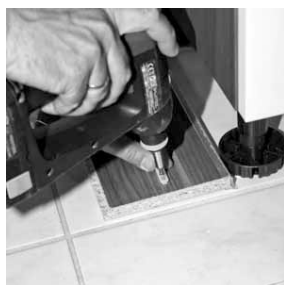
Before fitting the plinth, make the cut-outs for the ventilation grille and dishwasher.



Adjust the side plinth accordingly.



Slide the supplied holders into the adjustable feet.

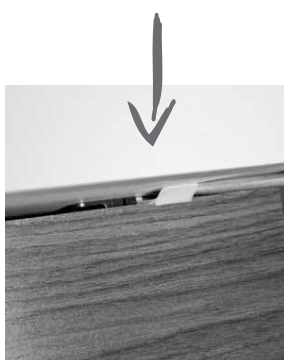


Align the connecting elements on the side plinth.

Screw the element on with Spax screws.



Then adjust the height of the supplied plinth corner.



Then carefully push the plinth under the furniture parts until it is in front of the plinth base.

Use a screwdriver to push the clip onto the side plinth. The fastening clip, which is tight under tension, holds the plinth under the furniture parts and presses the sealing profile onto the floor.

To remove the plinth, simply pull the fastening clip upwards.

WALL UNITS



Before you start fitting the wall units, cover the worktop well.



Take the fitting bag (no.120) for wall cabinet assembly from the service pack.

If spotlights are provided in the base of the wall cabinets, fit them first.



Use a pencil and a spirit level to draw a horizontal line on the wall at the height of the screw-on point.

Place the hanging rail between the outer sides of the wall unit. The rail supplied is approx. 4 cm smaller than the wall unit.



When drilling into the wall, be sure to watch out for power cables or water pipes.

Use fixings appropriate to the subfloor.

Make sure that the wall units are vertically aligned with the base units. Use a water level for this purpose.

The screw-on point of the rail is calculated as follows:

Niche height Q1 for carcass height 195 cm:

54.7 cm + wall unit height (e.g. 65 cm) = 119.7 cm
119.7 cm - 4.5 cm = 115.2 cm above top edge of worktop

Niche height Q2 with carcass height 195 cm:

48.2 cm + wall unit height (e.g. 65 cm) = 113.2 cm
113.2 cm - 4.5 cm = 108.7 cm above top edge of worktop

Attention:

The mounting material provided by us for wall installation (screws & plugs) is exclusively suitable for use in solid bricks, calcium silicate bricks, concrete, and facing bricks.

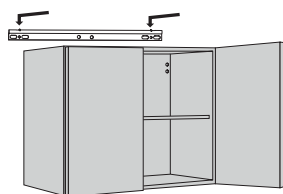
Suitable mounting material must be procured locally for other wall materials. The installation of wall-mounted furniture should only be carried out by trained professionals.

FITTING

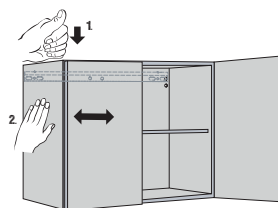
WALL UNITS



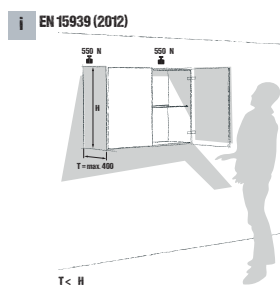
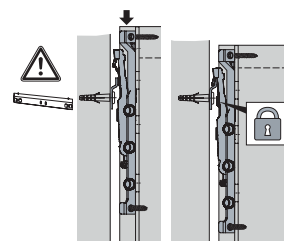
Before hanging the wall unit, release the transport lock above the shelves and carefully remove the shelves from the cabinet.



After you have fitted all the rails, hang the unit to the wall.

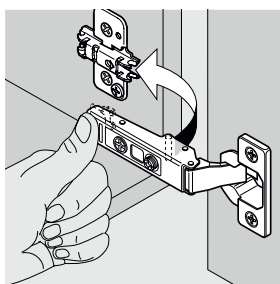
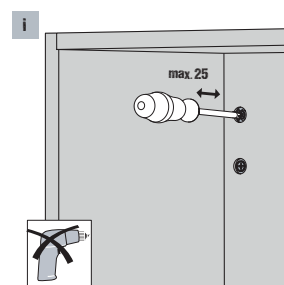
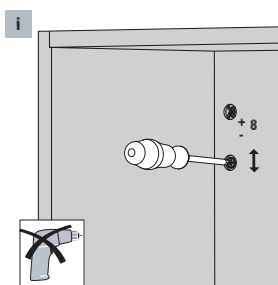


To align the wall units, place a water level on the furniture parts.



After you have aligned all wall cabinets, connect the furniture parts with a clamp and pre-drill for the cabinet connecting screw.

Please ensure that the cabinet sides are absolutely flush at the front.



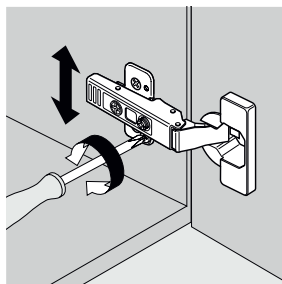
Fitting the doors.



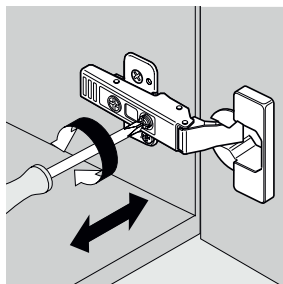
Finally, fit the handles with a hand screwdriver.

Note:
Please do not use a cordless screwdriver.

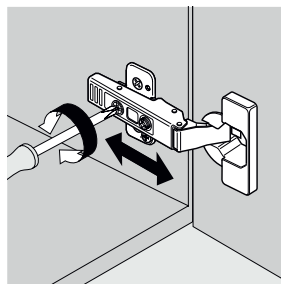
HINGES



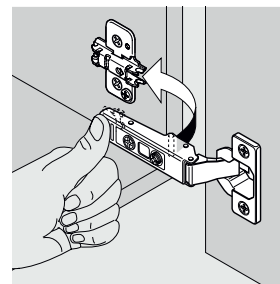
Height adjustment



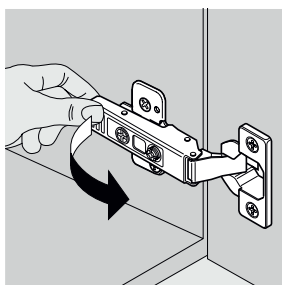
Lateral adjustment



Depth adjustment



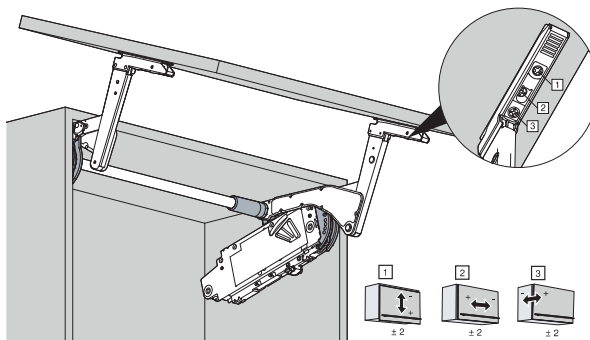
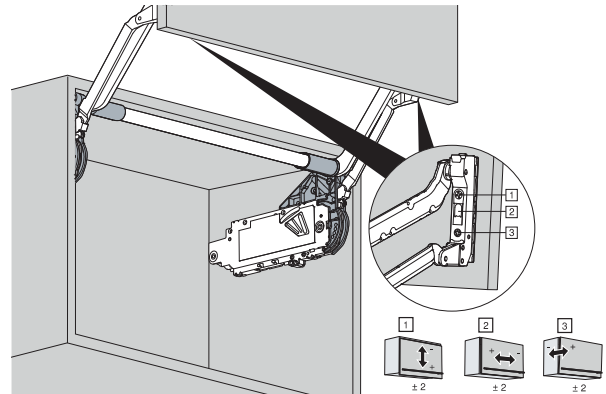
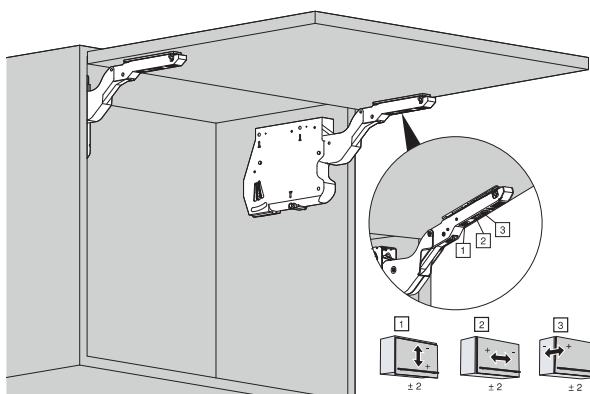
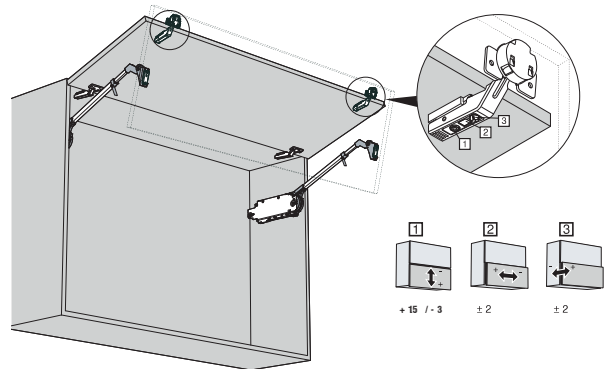
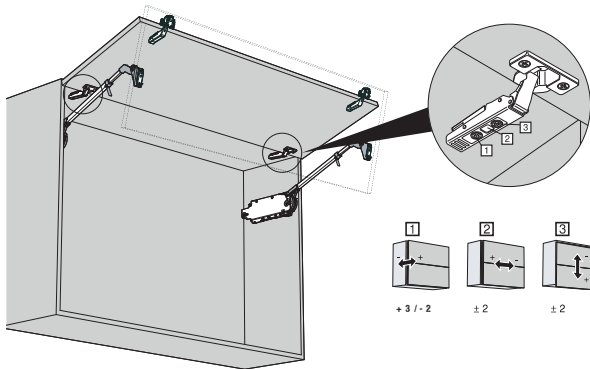
Assembly



Disassembly

F I T T I N G

ADJUSTMENTS



A D J U S T M E N T S

DRAWERS & PULL-OUTS



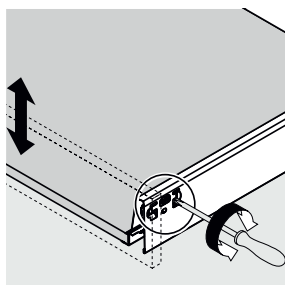
Lateral adjustment



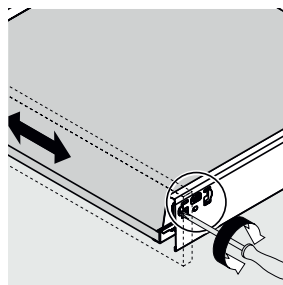
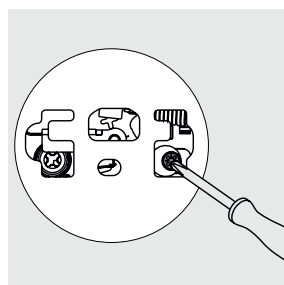
Height adjustment



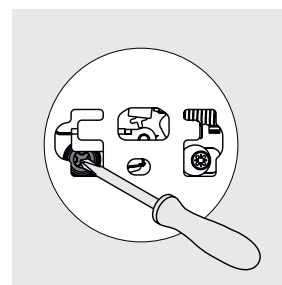
Disassembly



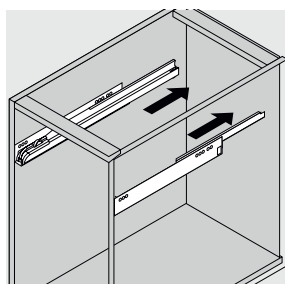
Height adjustment



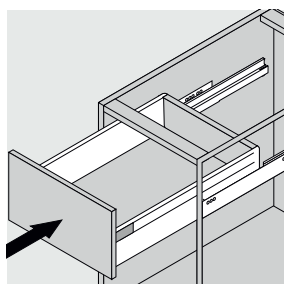
Lateral adjustment



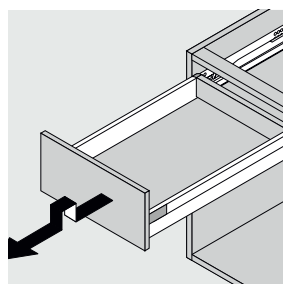
Hanging



Hanging



Unhook

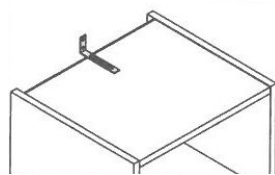


FITTING

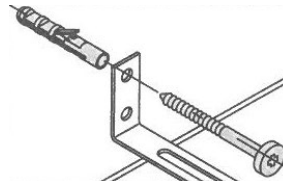
TALL HOUSINGS



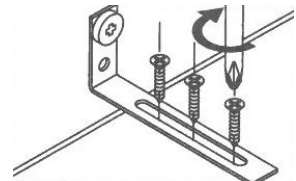
All tall housings must be joined to the wall behind them to increase stability.



The fixing bracket required for this and the screws and dowels can be found in the accessories box.



Attention:
The mounting material provided by us for wall installation (screws & plugs) is exclusively suitable for use in solid bricks, calcium silicate bricks, concrete, and facing bricks.



Suitable mounting material must be procured locally for other wall materials.

The installation of wall-mounted furniture should only be carried out by trained professionals.

WALL TRIM



Hold the wall trim on a trial basis at the intended locations to determine the required lengths and cut to size.

When using an inside corner, the top cover profile must be shorter than the bottom fixing rail, likewise for the outside corner.

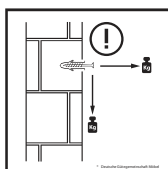


The fixing rail has to be mitred for corners and screwed to the worktop flush with the wall.

The cover profile is then pressed into the corresponding groove. The accessories such as screws, corners and end caps can be found in the accessories box.

HEAVY-DUTY SUSPENSION

1 assembly instruction

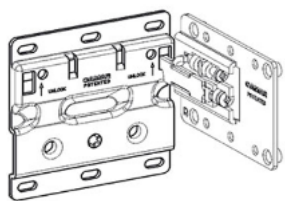


The cabinet suspension is already permanently fitted in the cabinet ex works and is permitted up to a cabinet height of 845 mm. The total weight per cabinet must not exceed 200 kg. Please check the condition of the wall before starting installation and ensure that there are no power cables or water pipes in the installation area.

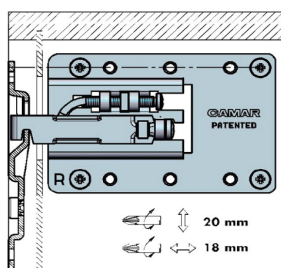
The heavy-duty suspensions incl. support plate offered by us are **only intended for use in solid bricks, solid sand-lime bricks, concrete and clinker bricks** in conjunction with the dowels and screws supplied.

For other building materials of the walls, suitable fixing material must be provided on site by the customer. The assembling of wall-fitted furniture should only be done by appropriately trained specialists.

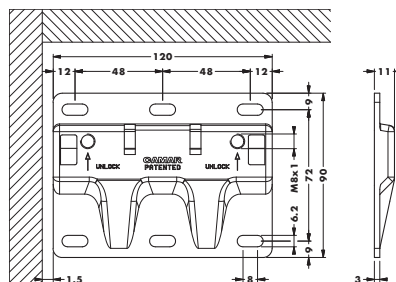
Failure to observe the safety precautions may result in serious personal injury and damage to property!



Front view cabinet suspension



Front view cabinet suspension



Front view of support panel

Drilling distances from top edge of cabinet:
40 & 112 mm

from side cabinet side edge:
30 & 126 mm

FITTING



NOTES:

- with a worktop depth of 60 cm, the base units should be pulled forward 1 cm from the wall; in this planning situation, side recesses or side-panels must be planned at the end of the row.

Use of L-profile

- for base units directly under the worktop for tall housings 156 cm directly under the cover shelf

Use of C-profile

- for base units and tall housings between 2 fronts

End of line with carcass side

- the carcass side is not routed through
- the carcass side has a routed pocket in which the profile ends

End of line with side panel

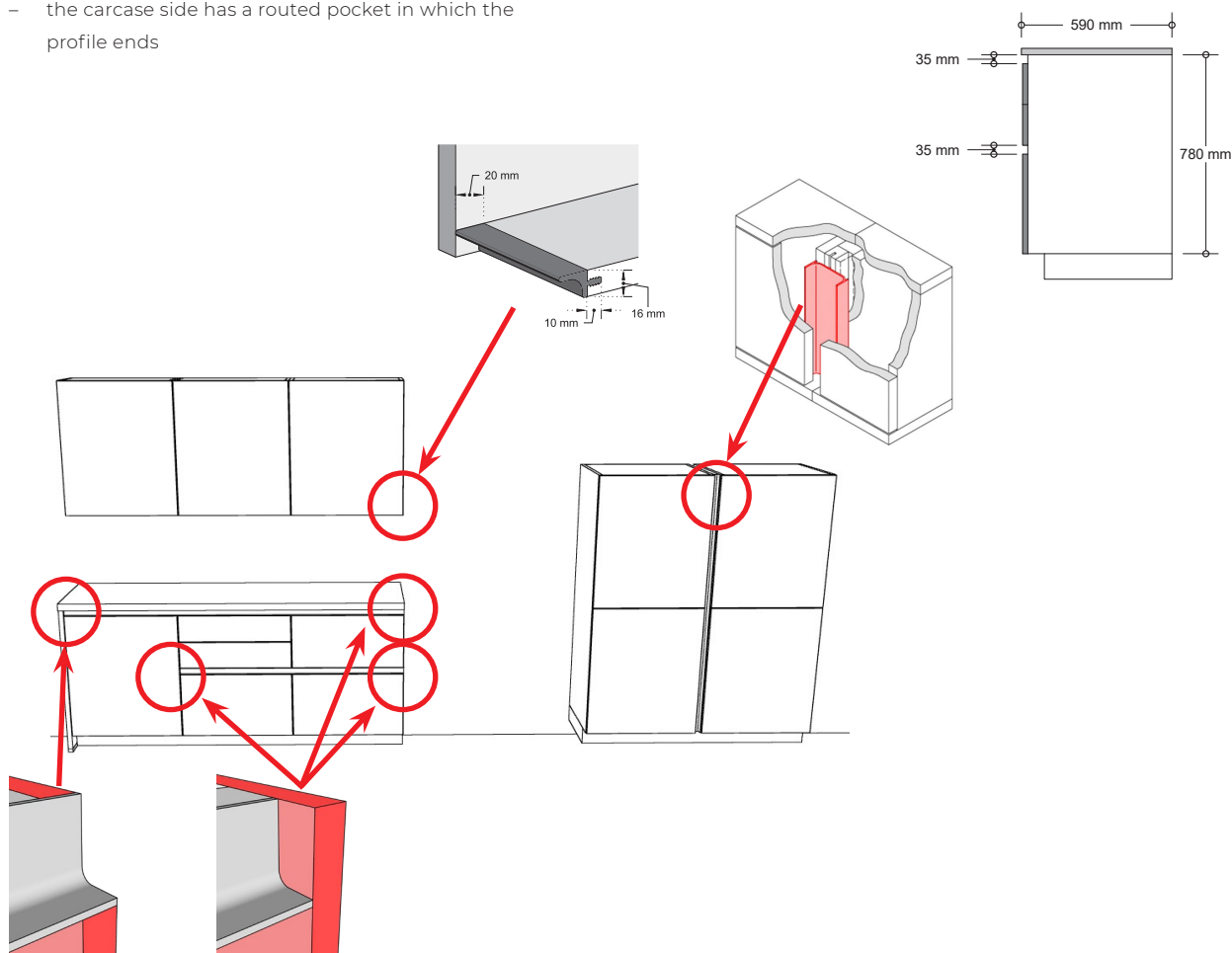
- the carcass side is routed through
- the profile ends at the side panel

End of line with filler

- the carcass side is routed through
- the L-profile runs through to the wall
- the C-profile ends at the filler

INSTALLATION OF DISHWASHERS:

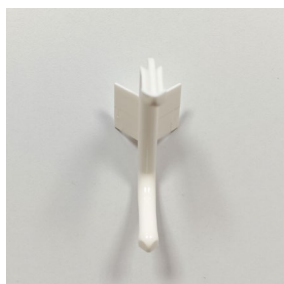
The installation of dishwashers with a niche height of 82 cm is possible from a plinth height of 10 cm. Dishwashers with a niche height of 86.5 cm can be used from a plinth height of 15 cm.



ACCESSOIRES



L-profile outside corner
ECKLA



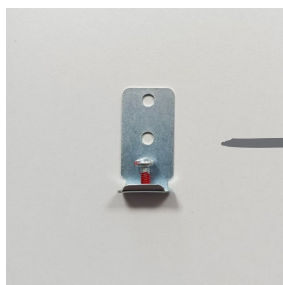
C-profile outside corner
ECKCA



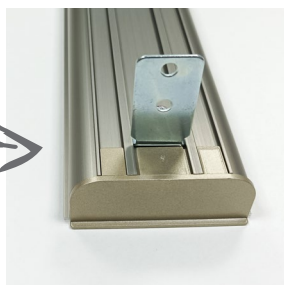
C-profile cover cap /
Pocket routing
ENDKTC



L-profile cover cap /
Pocket routing (fig. shows R)
ENDKTR



Fitting bracket C+L profile
BEFW



L-profile inside corner
ECKLI



C-profile inside corner
ECKCI



C-profile cover cap
ENDKC



L-profile cover cap (fig. shows L)
ENDKL

KM KÜCHENMEILE
GERMANY

WIR SIND TEIL DER KÜCHENMEILE A30!

WE ARE PART OF THE KÜCHENMEILE A30!

NOUS FAISONS PARTIE DE L'KÜCHENMEILE A30 !

WIJ MAKEN DEEL UIT VAN DE KÜCHENMEILE A30!

ARTEGO KÜCHEN GMBH & CO. KG
ZU DEN MEERWIESEN 17
32549 BAD OEYNHAUSEN
WWW.ARTEGO-KUECHEN.DE

